

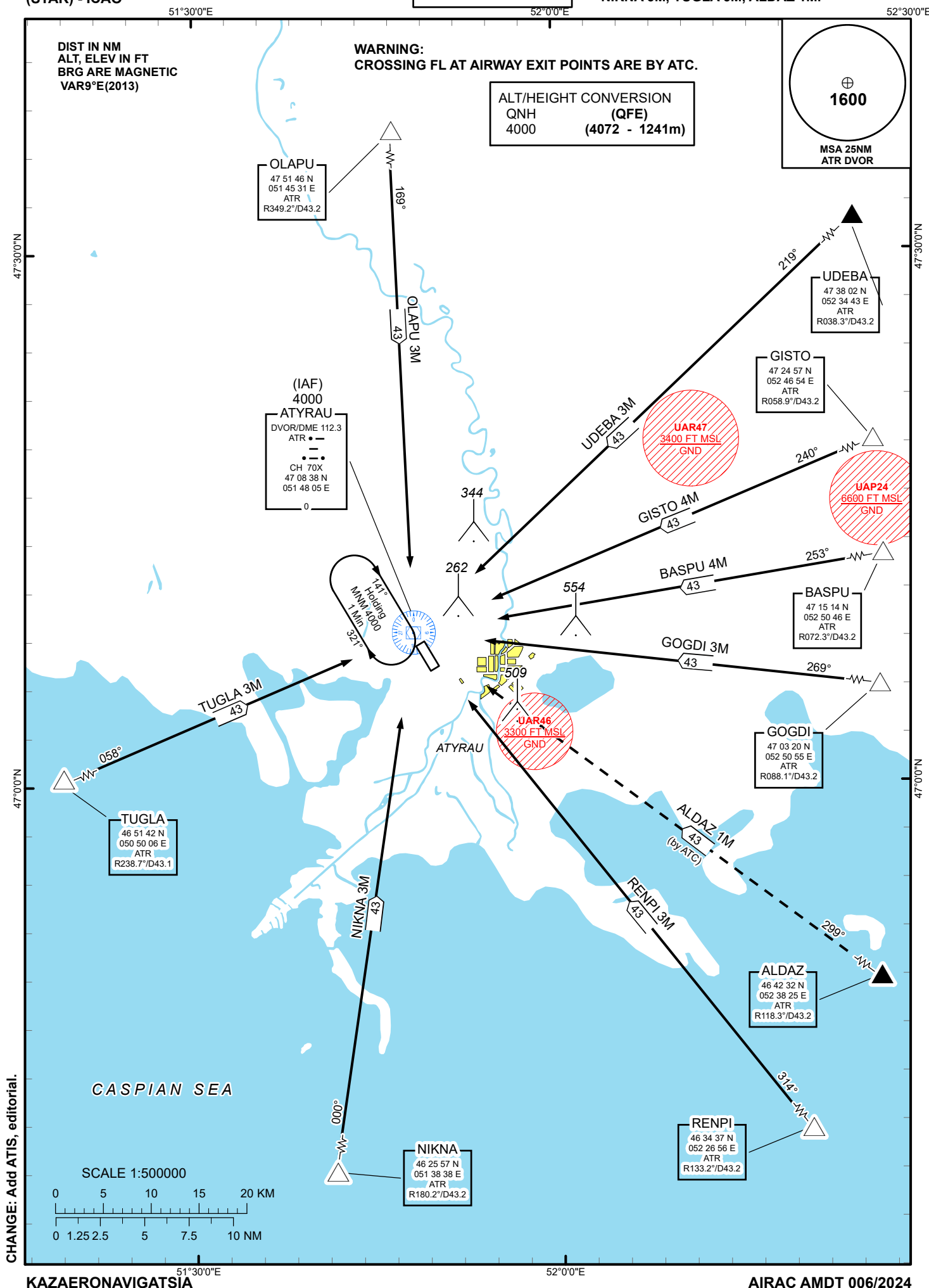
STANDARD ARRIVAL
CHART - INSTRUMENT
(STAR) - ICAO

TRANSITION ALTITUDE
10000 ft

ATYRAU TOWER 118.1
ATYRAU ATIS (EN) 127.4
ATYRAU ATIS (RU) 126.6

OLAPU 3M, UDEBA 3M, GISTO 4M,
BASPU 4M, GOGDI 3M, RENPI 3M,
NIKNA 3M, TUGLA 3M, ALDAZ 1M.

ATYRAU
RWY 32



Standard Arrival Routes – Instrument (STAR) ATYRAU RWY 32
OLAPU 3M After crossing OLAPU (R349.2°, D43.2 ATR) proceed on track 169° to ATR. Cross ATR DVOR at 4000.
UDEBA 3M After crossing UDEBA (R038.3°, D43.2 ATR) proceed on track 219° to ATR. Cross ATR DVOR at 4000.
GISTO 4M After crossing GISTO (R058.9°, D43.2 ATR) proceed on track 240° to ATR. Cross ATR DVOR at 4000.
BASPU 4M After crossing BASPU (R072.3°, D43.2 ATR) proceed on track 253° to ATR. Cross ATR DVOR at 4000.
GOGDI 3M After crossing GOGDI (R088.1°, D43.2 ATR) proceed on track 269° to ATR. Cross ATR DVOR at 4000.
RENPI 3M After crossing RENPI (R133.2°, D43.2 ATR) proceed on track 314° to ATR. Cross ATR DVOR at 4000.
NIKNA 3M After crossing NIKNA (R180.2°, D43.2 ATR) proceed on track 000° to ATR. Cross ATR DVOR at 4000.
TUGLA 3M After crossing TUGLA (R238.7°, D43.1 ATR) proceed on track 058° to ATR. Cross ATR DVOR at 4000.
ALDAZ 1M After crossing ALDAZ (R118.3°, D43.2 ATR) proceed on track 299° to ATR. Cross ATR DVOR at 4000.